



elo Berlin

PFA-Berlin
Postfuhramt

Rental

elo Berlin

Postfuhramt

Designed by Carl Schwatlo and built between 1876 and 1881, the Kaiserliches Postfuhramt, the former imperial post office, was used by the German postal system until 1995. In the beginning, the building served as the base for cartage operations, a post office and the postal and telegraph school. After 1945 it was home to various government offices, such as GDR news distribution agency and a works polyclinic. Initial efforts at restoring the ancient brick monument, which had been started in the 1970s, remained uncompleted after German reunification in the year 1989. Since 2006, C/O Berlin has had temporary use of a large section of the building.



01



02



03



04

01 Main entrance of the imperial post office on Oranienburger Strasse/Tucholskystrasse, 2000 **02** View of the imperial post office on Tucholskystrasse, 2000 **03** View of the imperial post office on Oranienburger Strasse, 2000 **04** Courtyard and bird's eye view of the imperial post office, 2000

C/O Berlin

Since its founding in the year 2000, C/O Berlin has been presenting a lively cultural program of international stature. As an exhibition center for photography, C/O Berlin presents the work of renowned artists, organizes events, promotes talented young artists, and accompanies children on voyages of discovery through our visual culture. C/O Berlin is a private institution that distinguishes itself through modern entrepreneurial thinking and up-to-date cultural management. Intensive educational work and close cooperation with institutions worldwide make C/O Berlin a unique locus of cultural exchange – one of a kind not only in Berlin, but in all of Germany.



01 The entrance of C/O Berlin 02 Room 6 . Pink Room 03+04 Hall

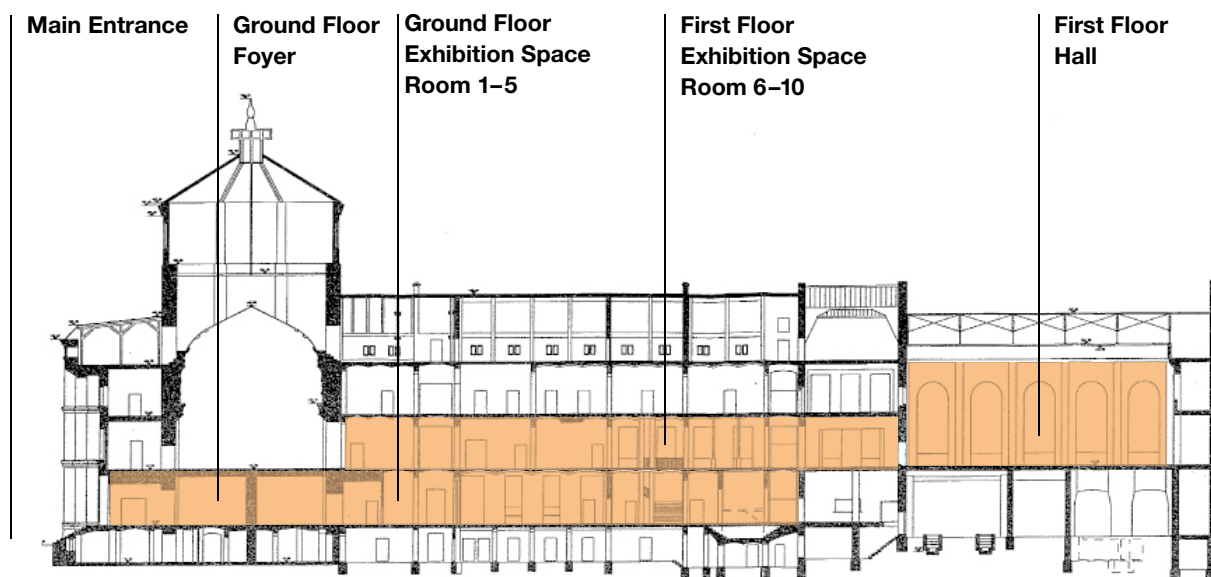
Services

C/O Berlin offers a wide range of spaces for events accommodating 20 to 500 persons. The availability of our spaces depends on our exhibition calendar. We would be pleased to provide information on our upcoming exhibitions and advise you in choosing the right setting for your event. Since the Postfuhramt is an architectural monument and not renovated, the technical provisions vary from room to room.

We recommend technical suppliers and caterers upon request, but leave the final decision up to you. Our individual offer includes organisational and technical service before and during your event.

Rooms

An imposing staircase at the corner of Oranienburger Strasse and Tucholskystrasse leads into an octagonal foyer with reception, bookshop, edition gallery, and history lounge. The exhibition spaces are located on both the ground floor and the first floor. Three interior staircases provide access to the first floor, where the former gymnasium as well as the restrooms can be found. The atelier, with separate restrooms, is located in the courtyard, which can be reached via the foyer or the entrance to the courtyard on Auguststrasse.



Foyer

Room 1

Room 2

Room 3

Room 4

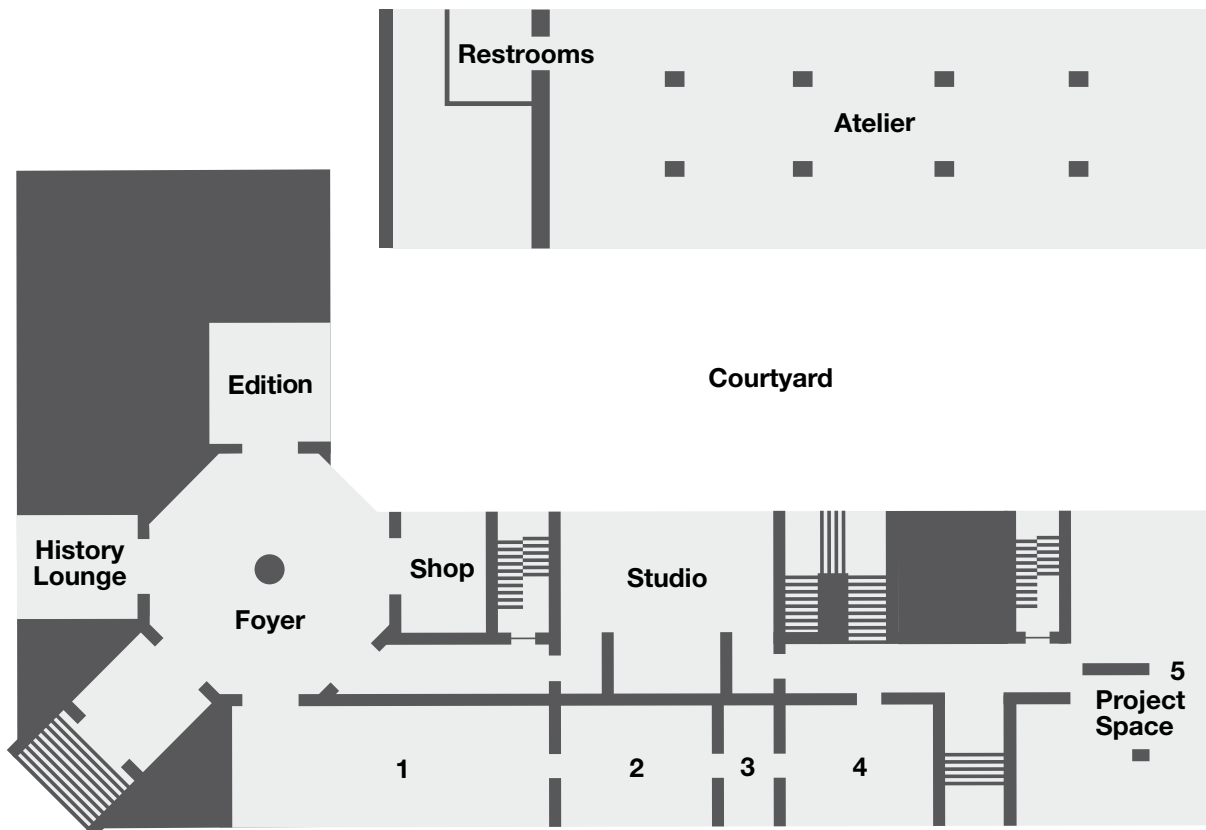
Studio

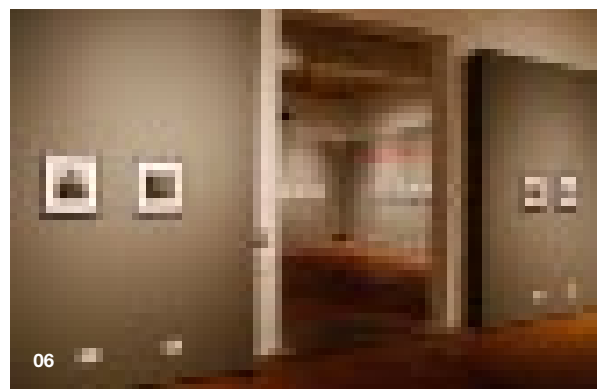
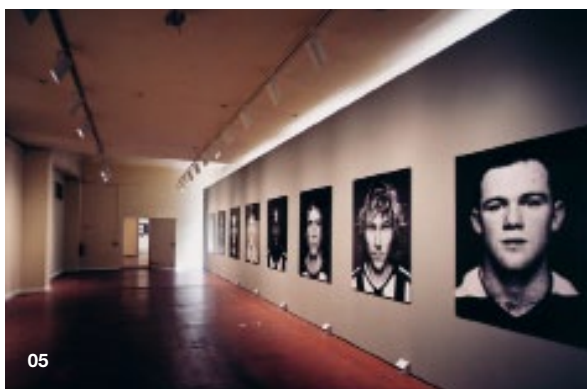
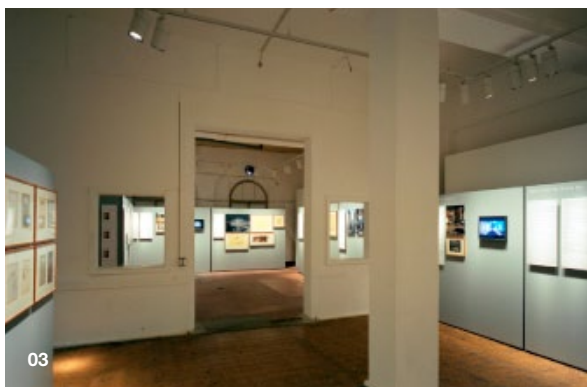
Room 5 . Project Space

Courtyard . Atelier

Restrooms

Separate Restrooms in the Atelier in the courtyard





01 Foyer **02** Room 1 **03** Room 5 . Project Space **04** Room 1 **05** Room 1 **06** Room 5 . Project Space

First Floor

Room 6

Room 7 . Pink Room

Room 8

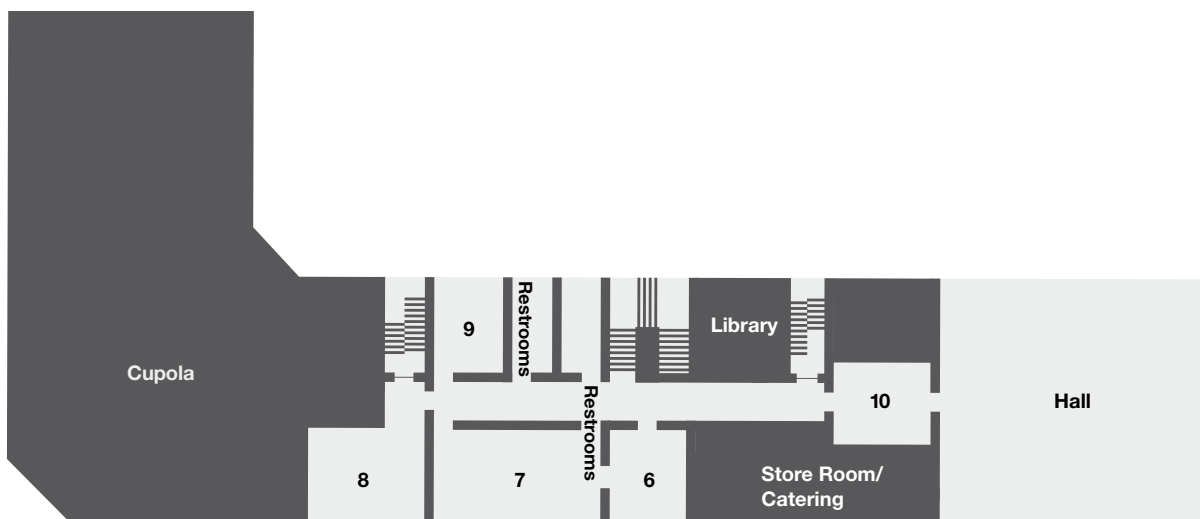
Room 9 . Cabinet

Room 10

Hall

Library

Restrooms





01 Hall 02 Room 6 . Pink Room 03 Hall 04 Hall 05 Room 6 . Pink Room 06 Hall

Contact

Contact person

Veronika Beckh
events@co-berlin.com

How to get there

C/O Berlin . Postfuhramt
Oranienburger Strasse 35/36 . 10117 Berlin
www.co-berlin.com

S-Bahn stop Oranienburger Strasse

U6 stop Oranienburger Tor

Tram stop Oranienburger Strasse

